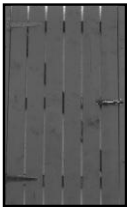


Gates August 2010

DISPLAY#1



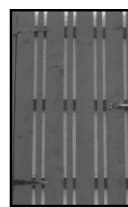
USING 6"x1" BOARDS
SQ TOP (GATE-VERT)
£3.69 PER ft2

DISPLAY#2



USING 6"x1" BOARDS
DOME TOP
£4.29 PER ft2

DISPLAY#3



USING 6"x1" + 2"x1" BOARDS
(GATE-VERT-6/2)
£3.95 PER ft2
 or
DOME TOP
(GATE-VERT-6/2D)
£4.39 PER ft2

DISPLAY#4



USING 5"x1" T G & V
TGVDOMETOP
£5.59 PER ft2
 or
TGV SQ TOP
£5.29 PER ft2

DISPLAY#5

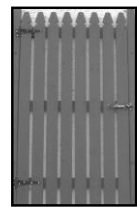
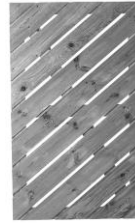
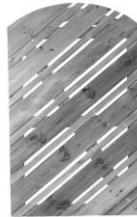
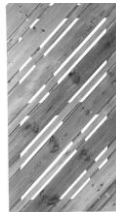
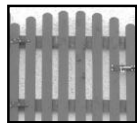
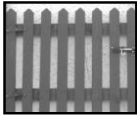


USING 5"x1" SHIPLAP
SHIPLAP SQ TOP)
£3.80 PER ft2
 or
SHIPLAP DOME TOP
£4.10 PER ft2



TO SUIT TANASREEN PANEL
SQ EDGE (GATE-S/EDGE)
£3.30 PER ft2
 or
TO SUIT TANABORD PANEL
FEATHER EDGE (GATE-F/EGE)
£3.60 PER ft2

Other Examples - Ask staff for prices



Field Gates

Goose Neck Field Gate (Horned)

width	height		
1.2m (4ft)	1.2m (4ft)	HGATE4	£105.00
1.8m (6ft)	1.2m (4ft)	HGATE6	£129.00
2.4m (8ft)	1.2m (4ft)	HGATE8	£139.00
3.0m (10ft)	1.2m (4ft)	HGATE10	£159.00
3.6m (12ft)	1.2m (4ft)	HGATE12	£175.00

Standard Field Gate

width	height		
1.2m (4ft)	1.2m (4ft)	WFGATE12	£95.00
1.8m (6ft)	1.2m (4ft)	WFGATE18	£119.00
2.4m (8ft)	1.2m (4ft)	WFGATE24	£135.00
3.0m (10ft)	1.2m (4ft)	WFGATE30	£149.00
3.6m (12ft)	1.2m (4ft)	WFGATE36	£165.00

